

OWL EYE®



MONITORING

Volume measurement of bulk

OWL EYE ® - MONITORING

What is OWL EYE ® - MONITORING?

With the Owl Eye Monitoring System it is possible to measure the volume of any bulk material stockpile digitally and precisely.

For example for automated inventory and for the optimization of processes.

OWL EYE ® - MONITORING is a complete and fully automatic inventory system for bulk material stockpiles of any size including database connection and interfaces for third party systems such as SAP.

Accuracy

Volume accuracy: >98%



Visualisierung & Daten

Webinterface,
Dashbaord, REST, OPC
UA



Support

Support is offered both
remotely and on-site
worldwide



Hardware

5m - 200m range, IP65+
Up to 55 sensors from
different manufacturers
can be integrated into a
single project.



Analyze

Store digital quality and
age information within
the 3D model of the
stockpile.



It is an advantage to think digitally. So think digitally, let us help to create your future. Our Owl Eye Monitoring System could be your first step to a digitalized warehousing process.

Conventional inventory of flat stores are based on:

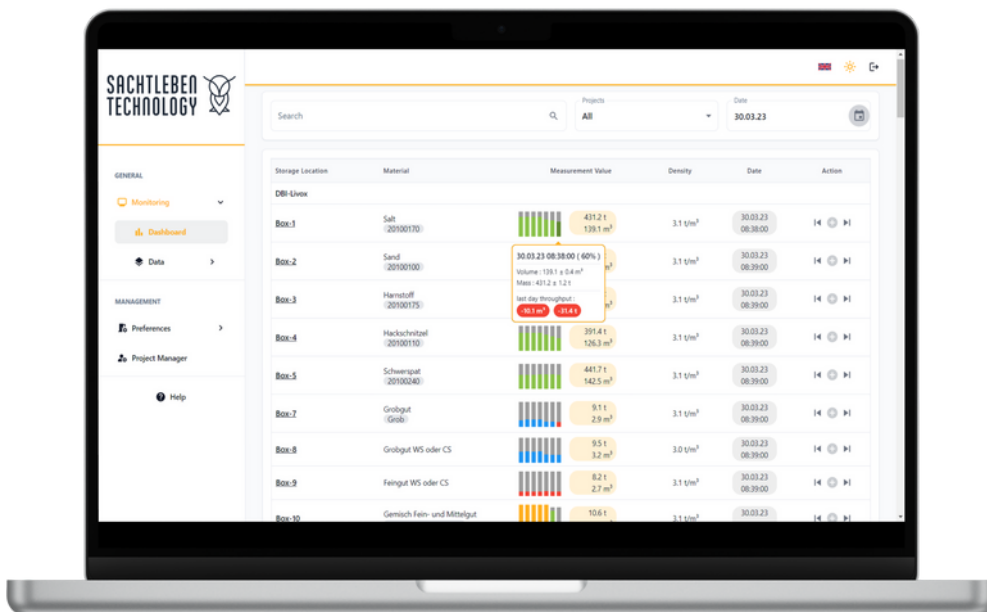
- Estimates
- Wheel loader and grapple bucket counts
- Weighing
- Input and output calculatin

Problem: Book stocks quickly deviate from real stocks.

Purchasing: There are still 300 t in stock. – wheel loader driver: The stock is empty.

- Production plans have to be adjusted
- Commercial accounting has to make corrections
- Customers cannot be supplied on time

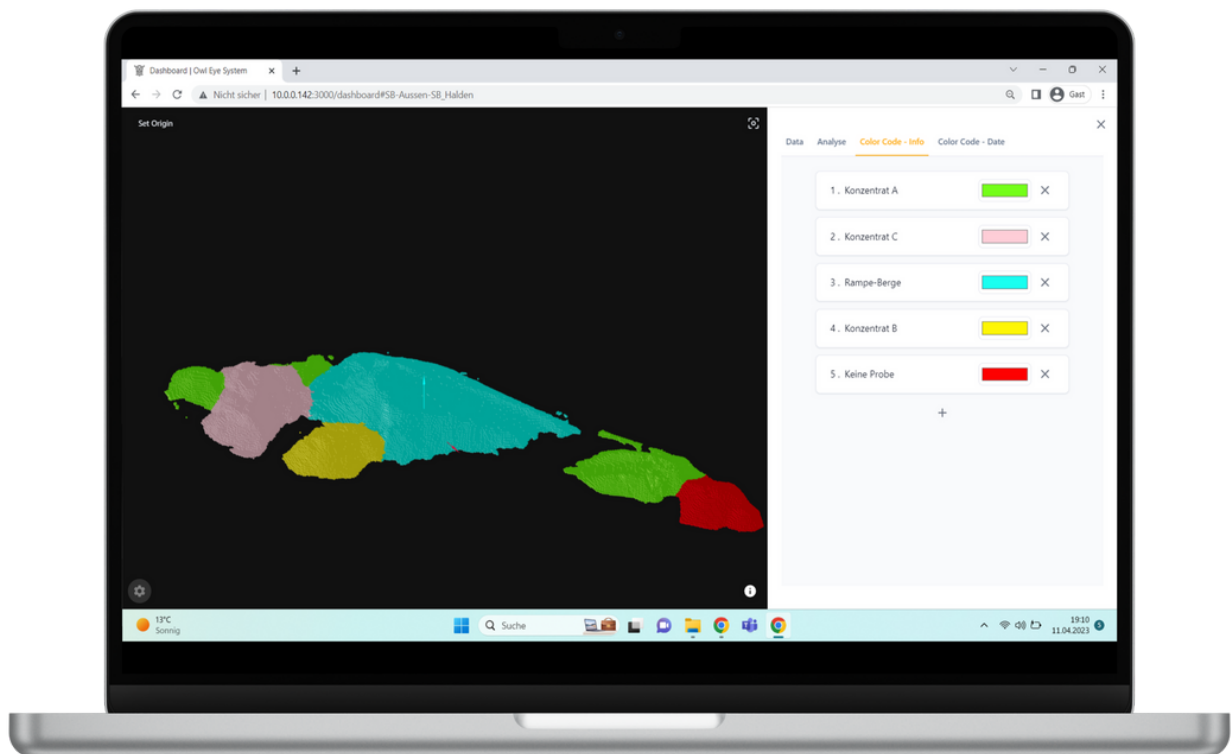
Decisions will be made based on facts rather than guesswork



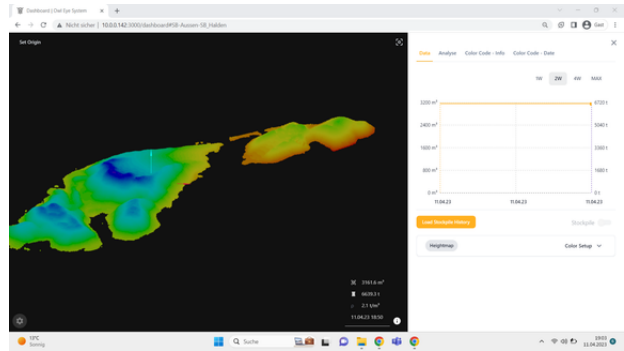
The Stockpile History module helps you to log the composition of your stockpile. Assign any information such as the grade or the result of your chemical analysis to individual areas of the stockpile. The age is automatically recorded.

Know how your stockpile is composed:

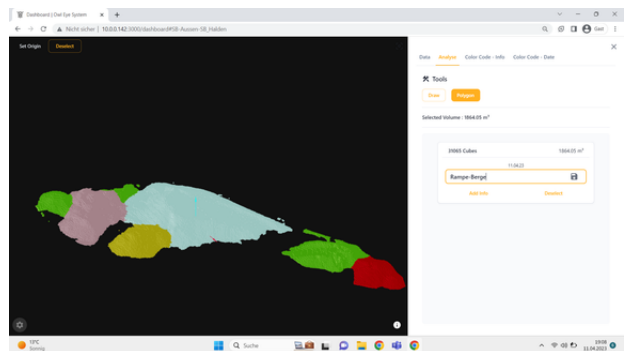
- Your stockpile is divided into discrete blocks
- Each block of the stockpile has a measurement date after recording
- Assign any information to each block individually or grouped. For example, the grade, the chemical composition or that you have not yet taken a sample
- You can assign a color to each piece of information. This is then visualized in the stockpile and you have a direct overview of the composition
- Color the stockpile according to the age of the blocks - this gives you a direct overview of how old the individual components of your stockpile are
- Mark an area of the stockpile and see the composition, age and volume of the marked blocks at a glance



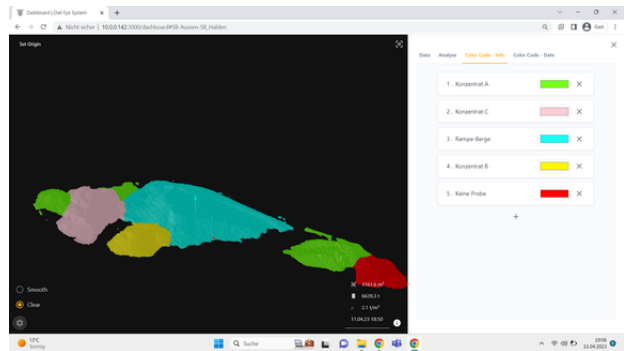
View and analyze a stockyard - even a stockyard consisting of several stockpiles can be monitored



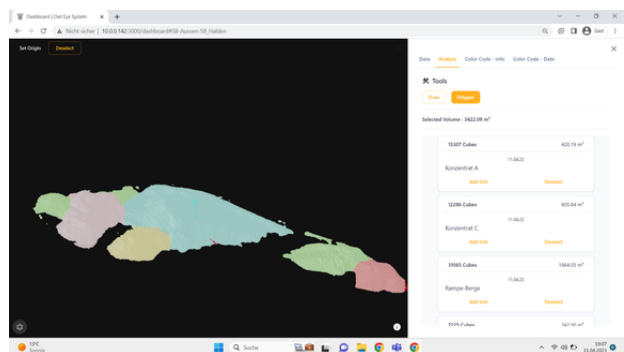
Select a range and enter information. For example, a grade or material description.



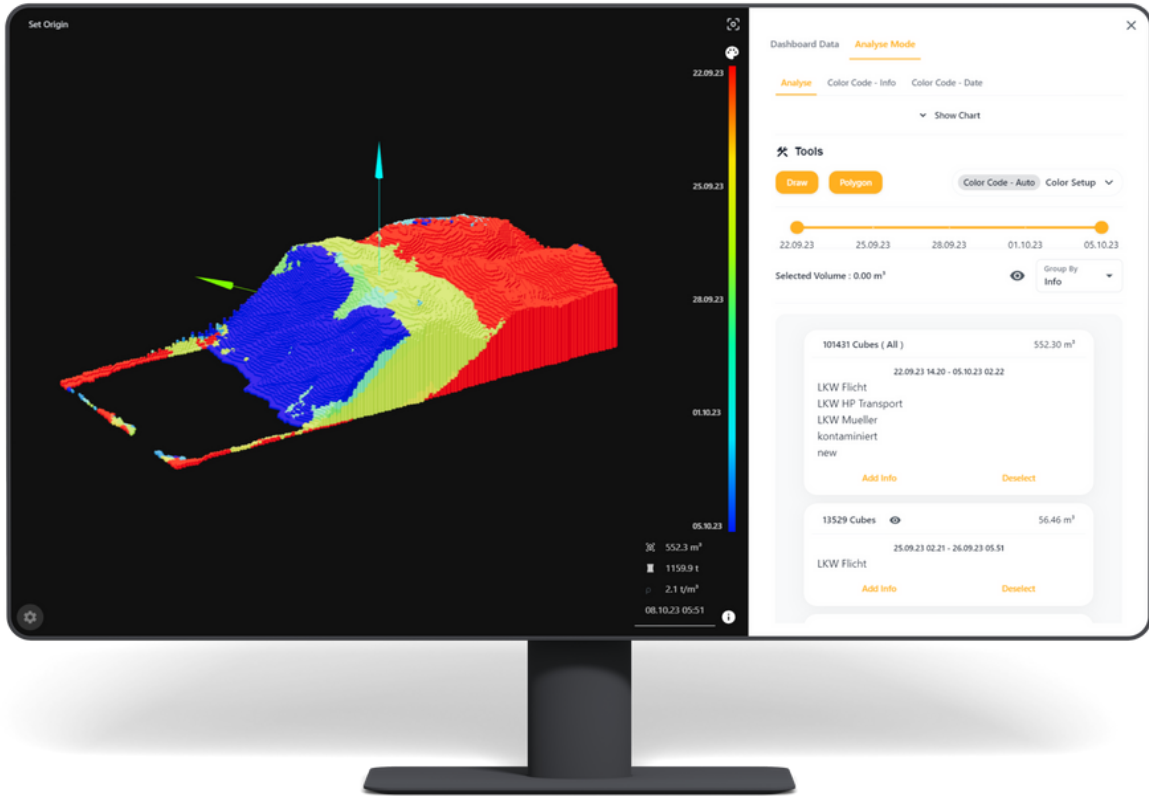
Assign a color to each piece of information. The stockpile will be colored accordingly.



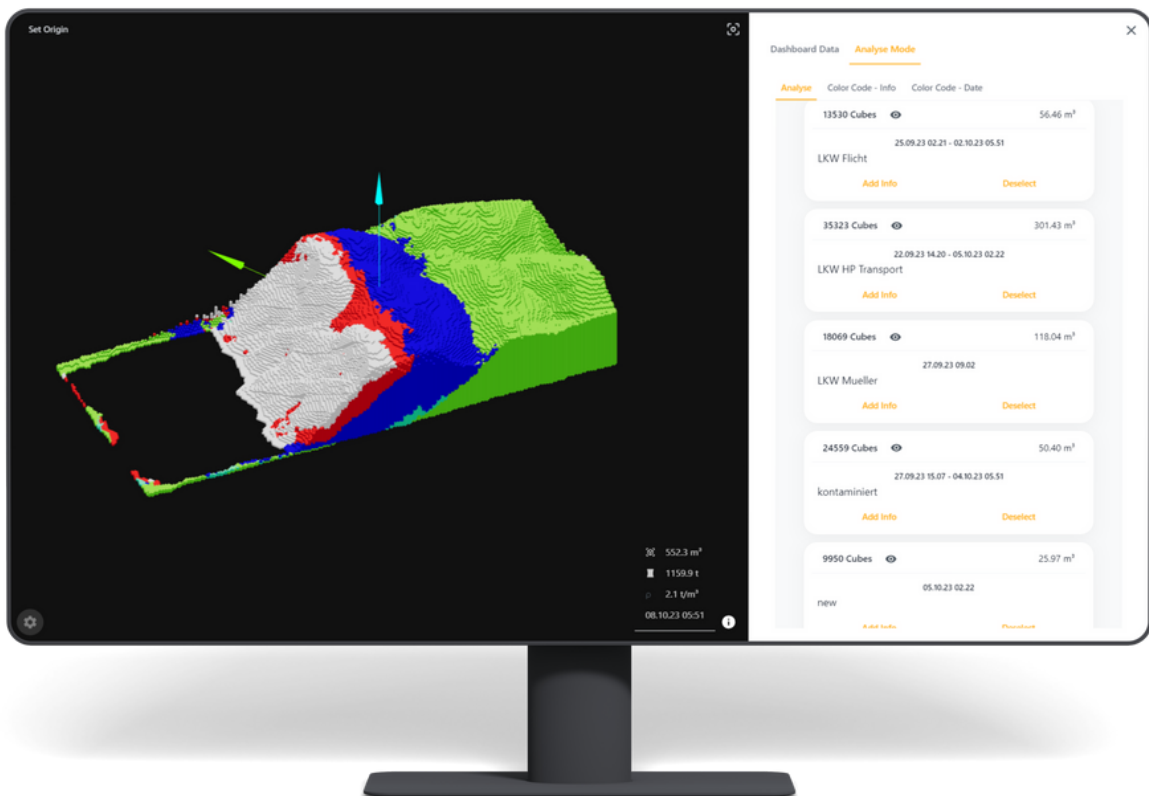
Select the entire area and have information about the quantities of the individual areas output. This will give you an overview of how much material you have with the respective information.



Inked stockpile according to time stamp:



Colored stockpile according to deposited information. In this case, the shipping company that delivered the material:



**We are your partner for the digitization of your warehouse.
With our Owl Eye System and the expertise of our team.
Improve recording and calculation of your bulk volume and reach a new
level: modern, digital, accurate.**



Sachtleben Technology GmbH

Bahnhofstraße 21-39
37431 Bad Lauterberg im Harz
+49 7831 969 22-190
info@sachtleben-technology.com
www.sachtleben-technology.com



A company of the:

SACHTLEBEN MINERALS 



Deutsche Baryt-Industrie



Sachtleben Bergbau